



# New Features in Version 15.0.01



# Introduction

This latest release of Powerproject introduces a range of enhancements that continue the evolution of the software based on customer feedback. This document highlights the new functionality delivered in this release; if you would like to see more detail on how to use these new features, please see the online help file within the Powerproject software.

In conjunction with this new release of Powerproject, Site Progress Mobile, the mobile device companion tool for Powerproject, has been rewritten to incorporate more functionality. These changes improve the user experience and streamline the reporting of project progress with new features including the ability to progress by a Quantity, to edit or annotate photos and to add new tasks to the programme. For full details, take a look at the Site Progress Mobile new features list [www.elecosoft.com/site-progress-new-features](http://www.elecosoft.com/site-progress-new-features).

## Overview of core improvements

### User Interface Refresh

The icons on the toolbar have been simplified and modernised, but the position and layout of Menu tabs or options has not changed.

### Check the quality of your schedules

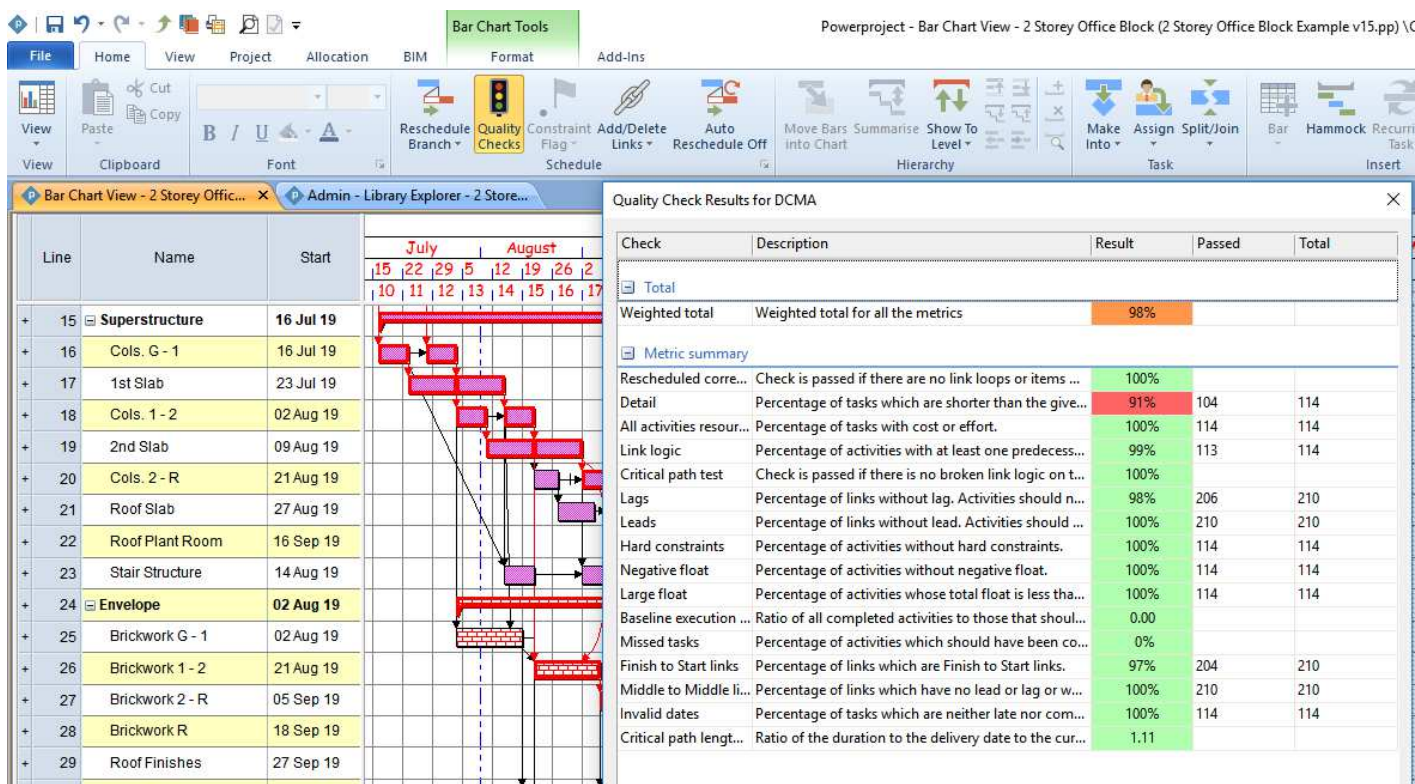
You can now use a Schedule Quality Check (SQC) on your project plan to identify whether it has been well planned and complies with industry or company standards. You can build your own SQC as a combination of tests from a choice of recognised industry metrics and set individual thresholds.

You can save the SQC in a Library of checks. Published standards such as DCMA and CIOB are supported.

When the SQC is executed, an overall score is available and a detailed report is produced, which gives a value to rank the robustness of your plan as a Red, Amber, Green and numeric scoring.

The SQC contains a set of industry standard quality metrics that you can combine to monitor the quality of a schedule. For example, you could include a "Link Logic Metric" which checks that tasks have at least one incoming and one outgoing link. You could specify that the test counts as a pass if 95% or more tasks are linked and that a fail might equal 85% or less, with a value between these thresholds generating a warning.

Once you have set up the SQC, you can copy it as a Library item to another project as well as including it within your Powerproject template. This makes it easy to implement an approved SQC across all projects.



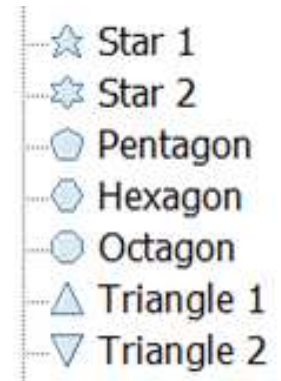


## Milestone shape library

Before this release, milestones were limited in appearance to a single diamond shape. However, you can now apply a wide range of shapes from the new “milestone appearance library” that has been added to Library Explorer.

You may want to use different shaped milestones to differentiate between Start and Finish milestones for example, or to represent different types of event such as water-tight, power-on or client handover.

For each milestone appearance, you can specify its name, the way in which the milestone is aligned in relation to the actual point of time and the order in which the milestones appear in an optional legend in printouts. Colour is still determined based on Code Library assignment.



## BIM – Build Direction enhancement

A major enhancement to BIM functionality has been included in this release.

A Simulation Profile can now define the direction by which a 3D element is revealed during a time-simulation. For example, brickwork can be animated to appear from the ground up, or piles can be shown moving downwards. This gives the time-simulation a more realistic presentation.

## Baselines

Before this release, baselines of local projects were separate files with a .ppb file extension. From now on, any new baselines that you create for local projects are embedded automatically into the corresponding project .pp file. This means you can email someone a single file that will contain all the baselines you have made.

If you are working with a baseline that is embedded into a local project, you can now export the baseline to a separate file. You may want to do this to make a baseline available to someone else without providing them with the project itself, to save a copy of a baseline for reference purposes before deleting it from a project or to make the .pp file smaller.

When you import a project as a baseline, you can now specify how to map tasks in the import with tasks in the active project. You can choose to use user editable Unique Task IDs as the association method to give you more control over the process.

You can now also import files that have been saved as a Primavera XER export as baselines.

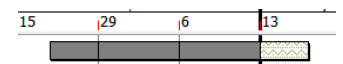
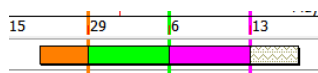
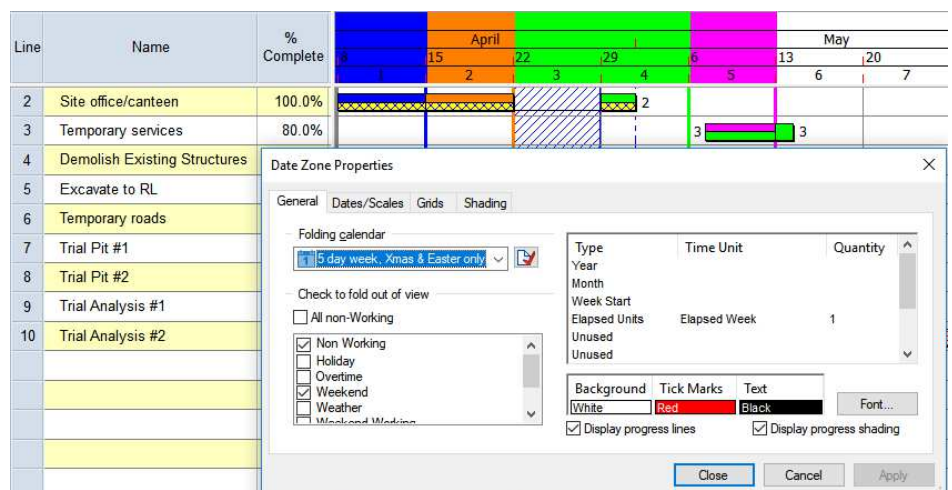
## Progress Appearance

There are now more progress display options on the Bar Chart to increase the clarity and impact of actual progress marking, progress lines and colour-schemes.

You can now display progress lines and shading in the Date Zone. This can help to make the report date of each progress period more obvious, particularly when progress lines are displayed as jagged rather than straight.

You can choose to make the actual progress marking fill the whole task depth, rather than only the top half of the task.

You can make all progress period marking and lines have a single selected colour.



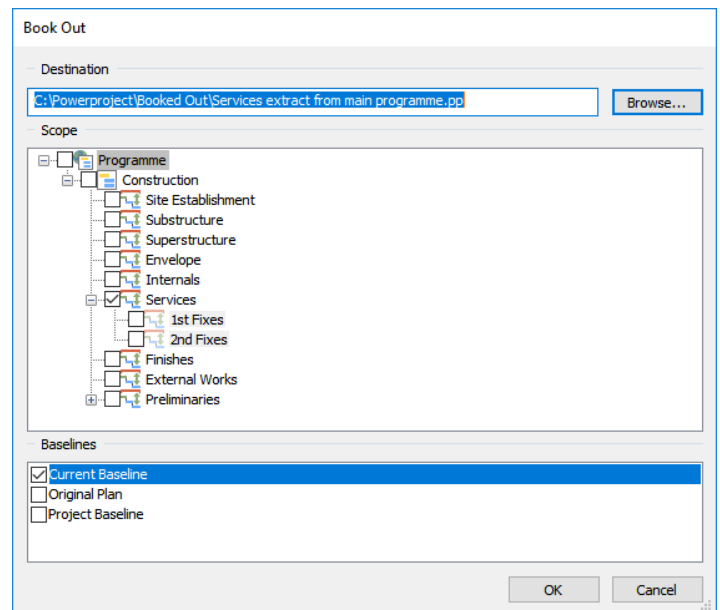
## Print the Code Library Legend on every page

Previously, if you chose to include legends in a printout, they always printed on the final page. You can now also choose to print legends at the bottom of each page and whether it includes only those codes appearing on that page or all items that appear somewhere in the printout.

## Improvements to booking data in and out

This release introduces a completely new way of booking data into and out of projects for remote editing. This functionality has been completely rewritten to simplify and improve the booking in and out of data.

- You now book out data by selecting one or more charts or summary groups, rather than by “tagging” individual tasks.
- Different book out statuses (read-only, read-write and read-write-delete) have been removed. Once a summary group(s) has been booked out, it is now always editable in the destination project and always read-only in the master project.
- You can now control whether users can book out summary groups, and whether users can cancel book outs that have been performed by users other than themselves, within the Chart Access Rights tab of the Security Group Properties dialog.



This improved feature makes it easier to share part of a plan with a colleague or supply-chain partner, allowing them to change only the section you choose. These changes are then easily integrated back into the master plan.

## Link Chasing

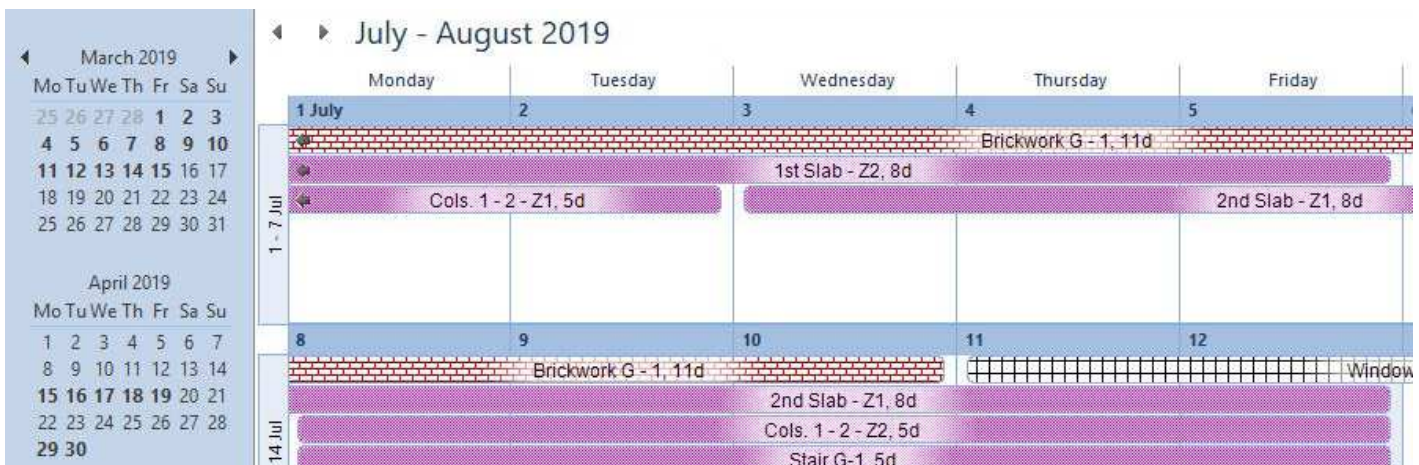
The Link Properties dialog has been re-designed with the optional to add additional columns.

Double-clicking a link now ‘chases’ the logic path, highlighting the route of navigation and centring the linked task on-screen.

This helps in understanding the logic arrangement of a plan to visually highlight and trace dependences. This augments the existing View based Path-To/From and Predecessor/Successor mode.

## New Calendar View

A new View type is available to see tasks (and/or resources) on a calendar grid. This will aid the communication with all participants in a Day/Week or Month period for a specific project and offers an alternative to a Bar-Chart or spreadsheet table.

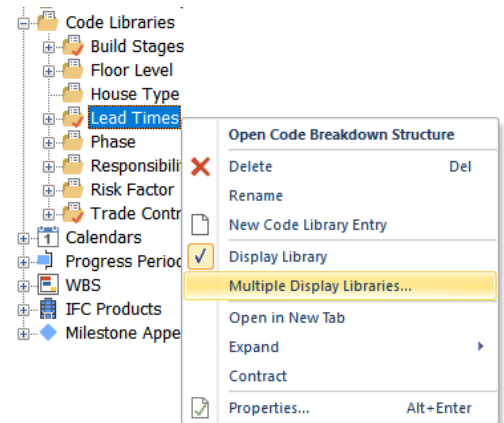


## Other highlights


### Display Codes from multiple libraries

Before this release, you could display only the codes from a single library on the bar chart at any one time. Some users wanted to display at the same time the codes from more than one code library and, to get around this restriction, created all of their codes in a single code library which could become difficult to maintain.

Now, you can display the codes from more than one code library on the bar chart at the same time. This makes it easier to maintain, use and communicate different Code Libraries for distinct purposes.



### Select objects in the Bar Chart using an Area Select Tool

You can now select multiple objects in the bar chart using a new area select tool . Using the area select tool, you click and drag an area in the bar chart and everything within, or touched by, the drawn area, including tasks, allocations and links, are selected. This may be useful if you want to delete, copy/paste, or group edit the codes, resources or other library object of multiple items.






### Duplicate the links from outside a group of tasks on Copy/Paste

Once you have copied a group of tasks as well as the normal paste option you can now choose to paste and duplicate logic links from outside the group of selected tasks.

This can make it much faster to clone sections of a plan where there is a high degree of repetition.

### Display an indicator in the spreadsheet to identify the status of tasks

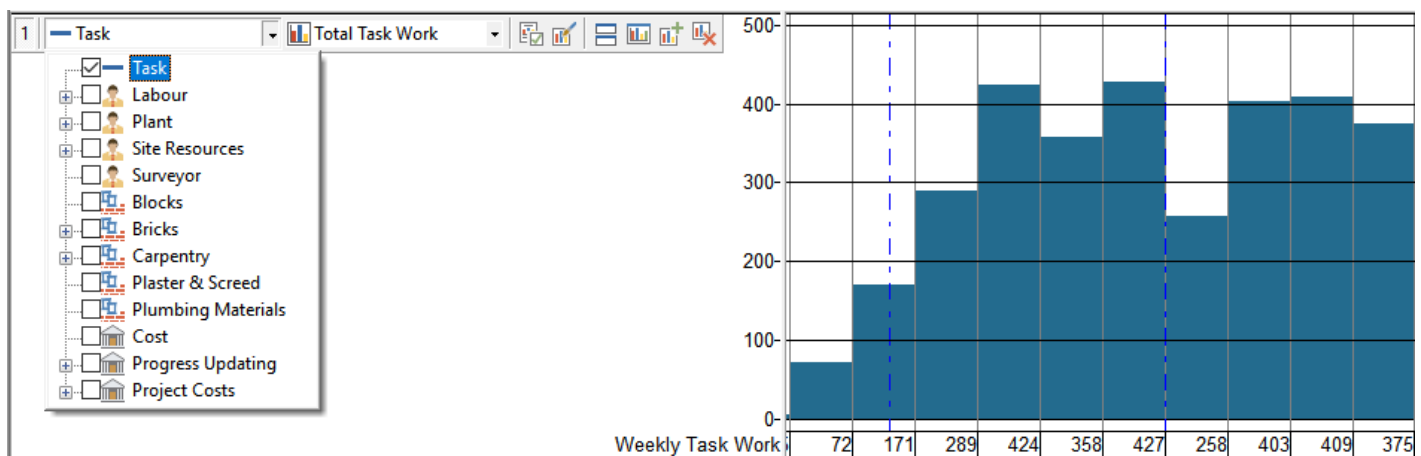
You can now optionally display an indicator in the spreadsheet to identify the status of tasks.

This allow the spreadsheet alone to communicate if tasks are critical and not yet started , critical and underway , not-critical and not started , not-critical and underway a , or wholly complete .

### Task-Work can now be graphed

You have always been able to assign a Quantity of work to a task (called Task-Work) and an optional Work-Rate to calculate a duration. This is different to a labour or material resource assignment.

In this release it is now possible to display a graph of the use of Task-Work over time.



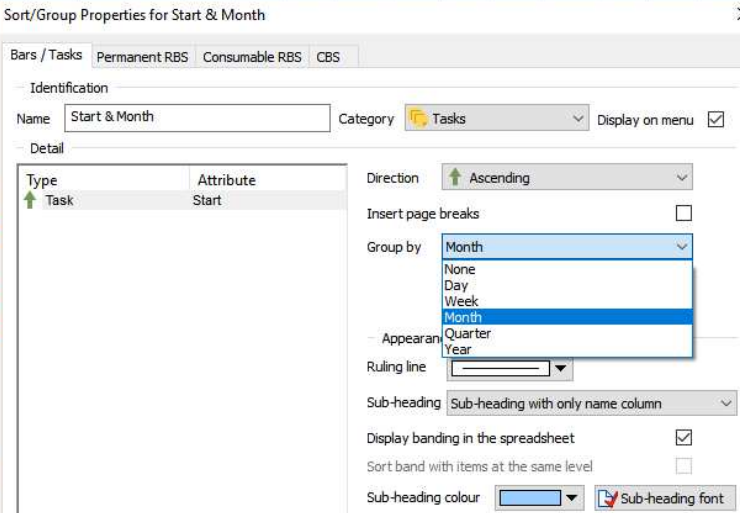
### Use the Link From/To dialog to link many different tasks at once

You can now enter a whole list of task Unique-ID values to create the same link from/to a selected task. This makes it much faster to create multiple links in one operation.

## Group tasks or allocations in sorted/grouped views by day, week, month, quarter or year

You can now group the tasks in a view by day, week, month, quarter or year for any date field (e.g. start, finish, late-finish, etc.). For example, you could group together all the tasks planned to start in each week.

Line	Stage	Description	Start
<b>May 2019</b>			
1	Site Establishment	Fencing	13 May 19
2	Site Establishment	Site office/canteen	20 May 19
3	Site Establishment	Temporary services	20 May 19
4	Site Establishment	Demolish Existing Structures	20 May 19
5	Site Establishment	Excavate to RL	29 May 19
<b>June 2019</b>			
6	Site Establishment	Temporary roads	14 Jun 19
7	Site Establishment	Trial Pits	04 Jun 19
8	Site Establishment	Trial Analysis	05 Jun 19
9	Substructure	Piling	14 Jun 19
10	Substructure	Foundations to zones A & B with different depths and grade of concrete. Test cubes needed beforehand.	21 Jun 19
11	Substructure	Ground beams	28 Jun 19
<b>July 2019</b>			
		Foundations to zones A & B	



## Enter dated notes against tasks and link documents or webpages to tasks

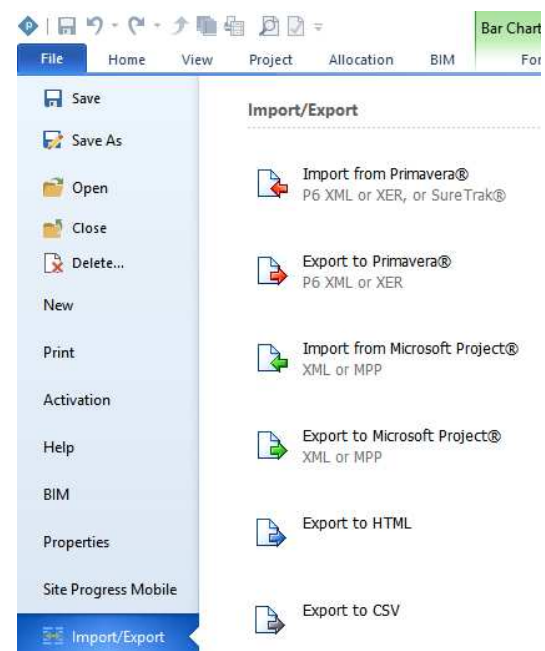
As well as being able to enter text notes against tasks, you can now also enter three additional types of dated notes, against which the creation date and time of each note is recorded. The following types are available:

- Text notes – with a title and further text detail if necessary.
- File notes – these are hyperlinks which can be clicked to open a particular file. Use these notes to attach relevant documents or photographs to tasks.
- URL notes – these are hyperlinks which can be clicked to open a particular webpage. Use these notes to link relevant webpages to tasks.

If you use the updated version of Site Progress Mobile to record progress against tasks in Powerproject projects, any notes that have been recorded against tasks by mobile users, as well as any photographs they have taken, appear as dated notes against the relevant task.

## Import from and export to Primavera P6 in XML (as well as XER) format

Before this release, you could export and import projects in Primavera P6® XER format. In addition to this, you can now choose to export and import in the P6 XML format. This has several advantages; for example, baseline information is included in the XML format but not in XER.





## Additional new features

- Selectively remove progress from tasks according to the Progress Period in which it was recorded.
- New Filter options for tasks:
  - With a certain amount of slip
  - That should have started by a certain date
  - With links of a certain type
  - With links that have a certain amount of lead/lag
- The Planned Task-Work (how much Task-Work should have been done by the Progress Date in the baseline) is now available. Particularly useful now Site Progress Mobile can progress by Quantity drawn from the Task-Work value.
- During printing the scaling effects for text annotations has been revised in line with the scaling effects applying to the spreadsheet.
- An optional change to progress marking for multiple tasks on one row with Out-of-Sequence progress has been implemented.
- It is now possible to specify an override colour for those tasks with the constraint type - ASAP Force Critical tasks. This is to aid the highlighting of these types of tasks. They can also be tested for in the Schedule Quality Check process.
- The new task date fields of Original Start & Finish dates have been introduced. These do not relate to a baseline, but are kept in step with the live tasks dates up to the point of first progress entry. After that point they are frozen.
- A new View can be opened using the WBS Scope of an existing View. If you have a deep hierarchically arranged project, opening a new View does not automatically default to the top of the WBS tree.
- It is now possible to create User Defined Fields on baselines. This allows additional, company specific, data to be recorded.
- “Local variables” have introduced to the formulae language to simplify complex formulae and allow formulas to call upon other formulae.
- You can set a project level Delivery Date. This is the intended completion date; it does not impact the critical path, but it is used to calculate the difference of the last task in the plan and the Delivery Date. It is used in one of the SQC metrics.
- The display of Summary and Expanded tasks can be forced to be displayed as non-critical, even if they contain tasks on the critical path.
- Transfer Progress control now appears on the Ribbon by default.
- It is now possible to open a Powerproject BIM project without their associated IFC 3D-models.
- The International currency code (£, \$, €, etc.) is now stored against currency units.

# Find out how our software solutions can help drive your business

Speak with our team today.  
[info@elecosoft.com](mailto:info@elecosoft.com)

