

Release Notes

CIVIL CONSTRUCTION

January 2023

20230113

Tilos 11.1 MR4

New & Improved	3
Licensing	3
Licensing scenarios	3
Clean installation licensing	3
Re-installation licensing	3
Upgrade from Classic license to Named user license	3
Calendars	4
Activities and Links	4
Scheduling, Calculations, and Progress	4
Gantt Charts	4
Views and Graphics	5
Histograms	5
Printing and Presentation	5
General	7
Fixed	8
Licensing	8
Import/Export/Data Exchange	8
Activities and Links	9
Scheduling, Calculations, and Progress	10
Gantt Charts	10
Views and Graphics	11
Histograms	11
Mass Haul	12
Printing and Presentation	12
General	12
Other	13
Known issues	13
Supported Languages	14

Reaching Sales, Support, and the Community	15
Trimble Tilos Community	15
Technical Support Hotline	15
Sales and Product Information	15



New & Improved

This Tilos release includes these new features and enhancements. You can now:

Licensing

- **Manage licenses more effectively** - The license management workflow has been redesigned to be easier, more intuitive, and less trouble-prone. [TIL-1688]
 - The License Manager is now a standalone executable. Changing the License Mode must be done before starting the main application.
 - The main application will read the configuration and respond to the license mode accordingly when launched.
 - The Help > License Manager menu item has been replaced with Account Info.

Licensing scenarios

Clean installation licensing

1. After you install Tilos, the License Manager opens automatically.
2. Select the license mode you want and close the dialog.
3. Start Tilos and click Sign in (if using Named User licensing).
4. Sign in with your Trimble Identity (TID) credentials and close the browser tab.
5. Return to Tilos. You are now licensed for use.

Re-installation licensing

1. After you install Tilos, do not open the program/close it if it opens automatically.
2. In the Windows Start box, type License Manager and click Start License Manager.
3. Select the license mode you want and close the dialog.
4. Start Tilos and click Sign in (if using Named User licensing).
5. Sign in with your Trimble Identity credentials and close the browser tab.
6. Return to Tilos. You are now licensed for use.

Upgrade from Classic license to Named user license

1. Use the same steps as re-installation above.

Calendars

- **Have MS Project use a Project Calendar parallel to the Standard Calendar** - In MS Project via Project Information, when you select a calendar other than the default standard calendar, this will become the calendar for each activity without calendar assignment. In the past Tilos did assign the Tilos default calendar to such imported activities. Tilos will now import this MS project calendar and set this as the activity calendar instead of the Tilos default standard calendar. [TIL-1591]

Activities and Links

- **Add a Noise level to resources, activities, and histograms to include noise predictions, especially for railways** - Use the new Noise level (dB) field for permanent resources and the Calculated noise level field for activities. This field is calculated as the maximum of all assigned permanent resources noise level values. This also enables you to report noise level in histograms (activity data fields in the list of report data fields). [TIL-1551, TIL-1637]
- **Use enhanced link options** - These have been added to enhance and ease working with links:
 - Button to exchange predecessor and successor activity (in case you created the link in the wrong direction).
 - Buttons for predecessor and successor activities to jump to the task. [TIL-1225]
- **Keep activity direction when updating activity via imported sectors** - When updating activities linked to an imported sector profile, the updated activities keep the direction you set prior to import, which helps avoid having to repeatedly set the desired activity direction after each update/import for sector linked activities. [TIL-1606]

Scheduling, Calculations, and Progress

- **Get a warning in reschedule results** - Warning message in reschedule results, when a used calendar has overlapping/wrong exceptions: "The calendars <list> has incorrect exception settings. This can lead to wrong calculation results and other severe issues. Please correct the calendars". [TIL-1337]

Gantt Charts

- **Create links between multiple activities in a Gantt chart time view** - If you have many activities in a Gantt chart time view, one after the other, you can now select all of the tasks, right-click and choose Link unlinked activities predecessor and successor by the order of the click. [TIL-958, TIL-960]

Views and Graphics

- You can now see and use new image details and options in the properties tab of a selected image:
 - **Resolution** - shows the height and width in pixels
 - **Picture type** - shows the image format (e.g., BMP, JPG, PNG, etc.)
 - **Size** - shows the storage size in KB or MB
 - **Actual DPI** - shows the calculated physical size on the screen
 - **Save to disk** - enables you to save the image file to your local drive [TIL-1697]

Histograms

- **Font setting for a resource bar-chart like in histogram** - The font for a resource bar chart legend can now be defined in the "Chart object" tab, in the same way as for a histogram. The font settings button has been removed from the resource bar chart setting; use the Chart object settings instead. [TIL-975]

Printing and Presentation

- **Picture scaling for presentations** - When preparing a PDF presentation, you can now set the scaling for the images it includes. This is done by resampling the pictures in the presentation by a given DPI (dots per inch). The scaling you choose can affect the quality of images, so your choices are:
 - **<none>** - Use the original picture resolution, which creates high quality images and the largest file size (~1.064 kB)
 - **Best** (300 dpi) - Create good quality images and a slightly smaller file size (~1.064 kB)
 - **Medium** (96 dpi) - Create moderate quality images and file size (~556 kB).
 - **Low** (60 dpi) - Create poor quality images, but the smallest, file size (~307 kB).Selecting **<none>** creates the PDF the fastest; all other methods take 2 -10x the length of time to generate and open the PDF in Adobe Reader/Acrobat. Image scaling has no effect on the output of scalable vector graphics (SVGs). [TIL-1691]
- **Control presentation image quality** - Reducing the quality of a presentation image (by resampling) reduces the size of the PDF. Using these settings can help you produce PDFs with smaller file sizes if a lower image quality is acceptable. [TIL-1338]
- **Select presentation detail level** - When preparing to create a PDF presentation, you can now choose the level of detail:
 - **Full details** (default and recommended) - Prints the maximum level of detail based on your settings (independent from what is visible on the screen). This will create ALL details possible for this view. **Note:** This will create the biggest output files and it may happen that objects (e.g calendar elements) get visible, that are NOT visible on the Tilos main screen.

- **As visible (zoom level)/Current visible details** - This will take the current zoom (in the preview window) as a base for the details. This is the most flexible, as the user can choose the level of detail he wants to have. [TIL-1698] Line style not correctly printed in presentation mode. - Depending on the view zoom level, Tilos displays (on screen) only those objects that are still displayable. This option prints the level of details currently visible on screen.

Note: Sometimes, fine, detailed line styles are printed with a smaller resolution. Tilos always prints the level of details connected to the visibility on the screen.

- **100%** - The details are printed, that are visible on screen, when having a 100% zoom: This is recommended, as it will probably create the most accurate result in quality and file size. [TIL-1698]
- **Enjoy improved Create presentation options** - For better ergonomic work, especially on high resolution screens, the Level Description text and the Close button have been moved to the top of the screen so (especially at higher resolutions) UI elements are closer to each other. More lines have also been added to the Level Description to accommodate longer descriptions. [TIL-1735]
- **In a Gantt chart presentation, print the histogram only on the last page** - If a Gantt presentation includes multiple pages and the diagram is visible, you can choose to print the diagram only on the last page. [TIL-1586]
- **Use enhancements in the Adjust to Template dialog** - These options are new:
 - Resource assignments
 - **Add/Replace** - Add or overwrite the resource assignments in existing activities. In previous versions, resource assignments were just replaced.
 - Category assignments
 - **Add/Replace** - Add or overwrite the category assignments in existing activities. In previous versions, category assignments were just replaced.
 - Detail settings
 - **Attributes** - Define the specific details to copy to activities, including the Name, Calendar, Layer, Activity type, Custom activity fields, Consider for Clash detection, and File links.
 - Calculation data
 - **Attributes** - Define the specific details to copy to activities, including Calculated, Quantity, Planned work rate, and Quantity factor.

- Progress settings
 - **Attributes** - Define the specific details to copy to activities, including Progress method, Assign activity quantity, and Total progress value.

General

- **Delete unused library elements from the Tilos file** - When you are working with complex template files, you can transfer just what is used in the project library when sending the file to a partner or client by deleting unused library elements. All unused elements can be deleted by selecting Help > Delete unused library elements. [TIL-1638]
- **Trimble Civil Product Service (TCPS) web page change** - The TCPS web address (URL) has been changed. The old URL will stop working on May 31, 2023, which will cause previous versions (up to Tilos 11.1 MR3) using Named User license mode to stop working; you will need to upgrade to the latest Tilos version. [TIL-1744].
- **Use help on a new platform** - Help has been moved to a live website (tiloshelp.trimble.com) that can host more media types, be updated at any time, and allows for user feedback. [TIL-1705]
Note: While the help platform/delivery system is new, not all content has been updated. Help edits are a work-in-progress. Thank you for your patience.
- **Reset toolbars** - We added a feature to always reset to the default toolbars when opening the file. This helps users to have a defined workspace at every startup of the file. Especially when working on different computers/Screen setups this may be helpful.
- **Compress project files** - You can now 'zip' project files to reduce their file size by checking the Compress project files box on the Tools > Options > Configuration tab. The compressed files have the extension .hspzip and can be opened in Tilos.

If you click Make backup of the existing file and overwrite:

- The backup file is located in the same location as the file you are saving.
- The backup file's name and extension are the same as the saved project file. The extension is .hsb when switched from uncompressed to compressed and .hsbzip when switched from compressed to uncompressed mode.
- The backup file is stored in the same location as the project file. The backup file is a copy of the actual file before saving. Copying is done before saving the new file. [TIL-1393]



Fixed

This Tilos release also includes fixes for reported or discovered cases in which:

Licensing

- A port 80 conflict stopped the Trimble Identity (TID) authentication process on some browsers, such as Microsoft Edge. [TIL-1677]
- Named User licensing stopped working. The license mode could not be switched to the Named User, but stayed in Demo mode after browser sign in. [TIL-1728]
- Trying to switch to a Named User license resulted in an endless loop connecting to the TID service. The only way of getting out of the loop was by killing the activity in Windows activity Manager." [TIL-1644]

Import/Export/Data Exchange

- Imported data had incorrect durations for activities, which resulted in wrong schedules. Now, projects deliver correct floats and the critical path in such circumstances. [TIL-1693]
- When importing from more than one Microsoft Excel sheet at the same time, the parent ID/structure were lost. When you imported link and activity information at the same time, the summary was not built. [TIL-1615]
- Sub-project IDs were ignored when importing from Primavera P6. This was potentially an issue with assigning activities to different sub-projects when importing from Primavera P6 (in this case from v18.8). [TIL-1507]
- Activity durations were wrong when imported after the first import from MS Project. For example, an activity that had a duration of 40 days in Project, had a duration of 118 days in Tilos, even though the start and end dates were identical. [TIL-1527]
- Quantity factor was not imported; it was always shown as 0.0, whether set in the import options or not. Even if the quantity factor was set inside the template, it was set to zero when created. If set, it should be imported. Quantity factor was also not imported when switching off all template settings. [TIL-1730, TIL-1715].
- Export to Microsoft Project included links regardless of which options were set. [TIL-1725]

- When doing a text-based resource import, the profile did not honor the Assign Sub-resources setting. When you changed a text import profile, the Assign Sub-Resources setting was not stored in the profile. When you used it the next time, the option was always off; the setting is now stored in the profile. [TIL-1672]
- Default import profiles were missing after an installation/reinstallation. [TIL-1661]
- When importing an xml file from Microsoft Project, some text information found in the xml (Text10) was not published. [TIL-1747]
- During a text import, the quantity factor value was not imported into the activity. [TIL-1566]
- Misc. issues were encountered exchanging data with Trimble Connect:
 - Additional attributes were added to the activity schema, but no values were transferred from Tilos.
 - Token names were shown in the Comment field.
- Options in the Import dialog have been renamed to be more consistent. Doing this eliminated RIB iTwo (unsupported for years) from the Profile Editor. [TIL-1664]

Activities and Links

- Enabling the Keep Distance Links option calculated an incorrect distance. [TIL-1646]
- Drawing sector-based shapes for profiled activities resulted in an incorrect/negative activity direction. [TIL-1538]
- Distance to successor links with lags were wrong when activities were drawn in a positive direction. The calculated lag was incorrect when activities went from left to right. [TIL-1211]
- Distance to successor links on profiled activities were no longer working. When there were two profile-based activities going in different directions, and they were linked with a Keep Distance link, the successor distance from the predecessor was not accurately retained. If the activities went in the same direction, the lag existed, but the distance was too small. [TIL-1174]
- Copy/pasting activities (and associated links) in a Gantt chart time or distance view did not work if done from the Bars panel. [TIL-1116]
- Dragging-and-dropping from a time-distance view included no activities or links in the destination file. [TIL-1697]

Scheduling, Calculations, and Progress

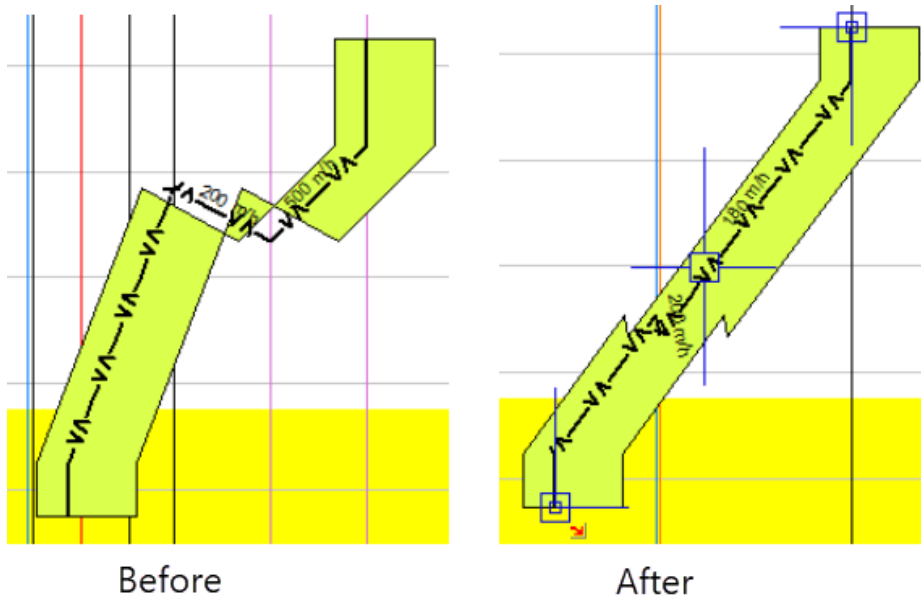
- Activity milestones were added as 1 hour instead of 0 hours to the total sum of the parent summary when Calculate progress by was set to Schedule (duration) in Options. When the activity type was Start Milestone or End Milestone, the hour value was added to the parent summaries total, which was wrong; it should have been 0.0. [TIL-1431]
- An XML file from Primavera P6 could not be imported. [TIL-1680]
 - When downloading changes, only "Comment" could be changed.
 - Quantities appeared in the change table, but were not visible in Connect.
 - The Start date was displayed incorrectly in Connect (but correct when you download it back to Tilos).

Gantt Charts

- Gantt charts did not suppress units when summary values were hidden. When summaries had a hidden value in the Quantity column, units were still visible and could not be hidden for summaries. When the summary quantity was set to zero, the unit disappeared. [TIL-1736]
- Selecting Display Dependency Table > Open as Gantt resulted in an empty Gantt chart. [TIL-1665]
- The report date line in a Gantt chart was not transmitted to the summary. The report date line did not show information on the summary from an indented activity. [TIL-1623]
- A fixed-size Gantt chart diagram got too big (bigger than the Gantt chart itself). In the Gantt chart object, if you chose to display with a fixed height (cm, not %) and entered a large size (e.g., 50 or even 100 cm), the diagram got too big/bigger than the entire screen. [TIL-1678]

Views and Graphics

- After embedding an OLE file, the program hung when you scrolled down. After a moment, an OLE server message popped up and Tilos crashed. [TIL-1629]
- In rare cases, sector-based lines/shapes (as well as the duration calculation) were being drawn incorrectly. This issue only happened when activities were created in a 'negative' direction. With this fix, your overall schedule may be slightly different after upgrading if it includes these types of activities. [TIL-1538]



- Using Copy Activity by ignoring the selected sub-project; the copied activity was in the original sub-project, but not the selected sub-project. [TIL-1305]

Histograms

- Histograms were not populating text from label groups; the text information from label groups was not shown, possibly when all histogram information was accumulated. Rebuilding the same cost + income histogram in a new cell did not change it. [TIL-1369]

Mass Haul

- Level from mass areas could not be updated; the right-most mass areas did not react to the level change. [TIL-1263]
- Gaps were found between mass haulage areas, possibly because the zero level had an influence or the view was corrupted. [TIL-1439]

Printing and Presentation

- Using Presentation Mode caused the program to crash in some circumstances. [TIL-1695]
- When a file was printed via Presentation mode, the text information from a vertical Gantt chart overlapped the area from its cell. The PDF also took a long time to open, during which you saw "Not Responding" on the program's title bar. Beside this, the OLE bottom right is not published to any of the by presentation mode built PDFs. [TIL-1630]
- Black squares appeared on the PDF while creating a PDF presentation. [TIL-1746]

General

- Table columns were hidden when scrolling and resizing grids. [TIL-1741]
- When using Fill time profile zones by sector color, the sector coloring was shifted and incomplete or missing. [TIL-1552]
- The view/user interface stayed in an undefined status when leaving the file from the Gantt presentation dialog. No explorer or properties bar was visible (apparently an undefined Gantt chart is opened). These improvements have been made:
 - The status of toolbars is not saved when leaving the file from the preview.
 - The Gantt Preview is not saved as the last chart.
 - All toolbars are returned to a default state." [TIL-1679]



Other

Known issues

- Using the Change Activity Direction option for profile-based activities might result in a different result than before. Also, when a sector-based activity is drawn in a positive direction and Change Activity Direction is enabled, the results can become unpredictable, depending on the position of the activity over the sector profile. [TIL-1511] [TIL-1538]
- These issues might be encountered when creating PDF and SVG presentations from large, complex layouts:
 - The SVG presentation is created, but produces an error in the viewer program and may be incomplete (grid lines are missing on the edges).
 - The PDF is created, but Adobe Acrobat/Acrobat Reader crashes after opening it (the file size is larger and takes longer to create than expected, so Acrobat runs out of memory).
 - If a PDF print contains dense grid lines (e.g., daily/hourly) and the lines are very fine, some PDF viewers may slow down when zooming far in to display those grid lines. [TIL-1585]

Workaround: These issues will be fixed and optimized in a later version. Until then, you can use the new Picture Quality and Level of Detail settings described at the top of page 4 in this document to bypass/prevent the issues.

- User-defined fields (UDFs) were not being added from Asta Powerproject 15 when using the Powerproject macro. Distance information was transferred properly (without formatting problems) from Powerproject 14, but from versions 15+. Therefore, Powerproject versions above 14 are not supported unless you deploy a Tilos fix for Asta Powerproject 15; to do so, see the [support note](#) in the [Tilos Community](#). [TIL-1188]
- In rare cases, inserting OLE objects into a graphic cell results in unexpected image sizes when the Keep proportions option is enabled. [TIL-1351]

Supported Languages

The Tilos program interface (UI) is available in these languages:

- Chinese (Mandarin, simplified)
- English (US)
- French
- German
- Italian
- Korean
- Polish
- Russian
- Spanish
- Turkish

It is possible to run more than one language edition on the same computer.

The Tilos program help is available in these languages:

- English (US)
- German

Sales and Product Information



FND S.C.

www.fndsite.com | info@fndsite.com

Trimble 2023 All rights reserved. Duplication is strictly prohibited. All trademarks registered.