

TAKE CONTROL OF YOUR RESOURCES WITH THE ASTA POWERPROJECT SUITE

Combine efficient project management and effective resource management with the Asta Powerproject suite.

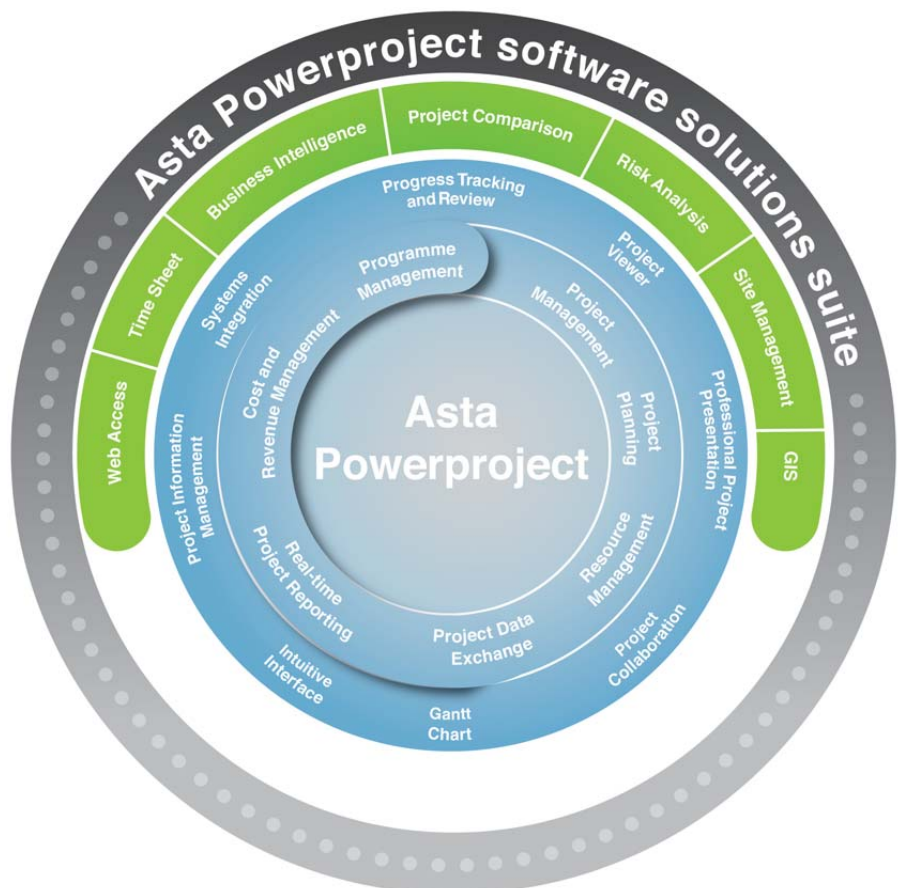
Asta Powerproject provides a powerful solution for accurately monitoring your organisation's performance, helping you deliver projects on time and within budget - whatever industry you are in.

Asta Powerproject allows the introduction of true collaborative working across your teams, departments or whole organisation by avoiding the need to use multiple systems for managing your resources - even when you are working on multiple projects.

Using **Asta Powerproject** you gain clear visibility over all your projects and resources, so that you can see your current and future workloads. The software also provides an excellent skill search capability to ensure that you are making the best use of each member of your team.

Asta Powerproject gives you the tools to take a proactive approach to resourcing issues which results in a steadier workflow and reduced waste by enabling you to:

- Allocate the most appropriate resources to each job
 - Ensuring that deadlines and standards are met
- Compare actuals against what was planned
 - Improving profitability
- Avoid resourcing bottlenecks with effective capacity planning
 - Increasing confidence in future project delivery

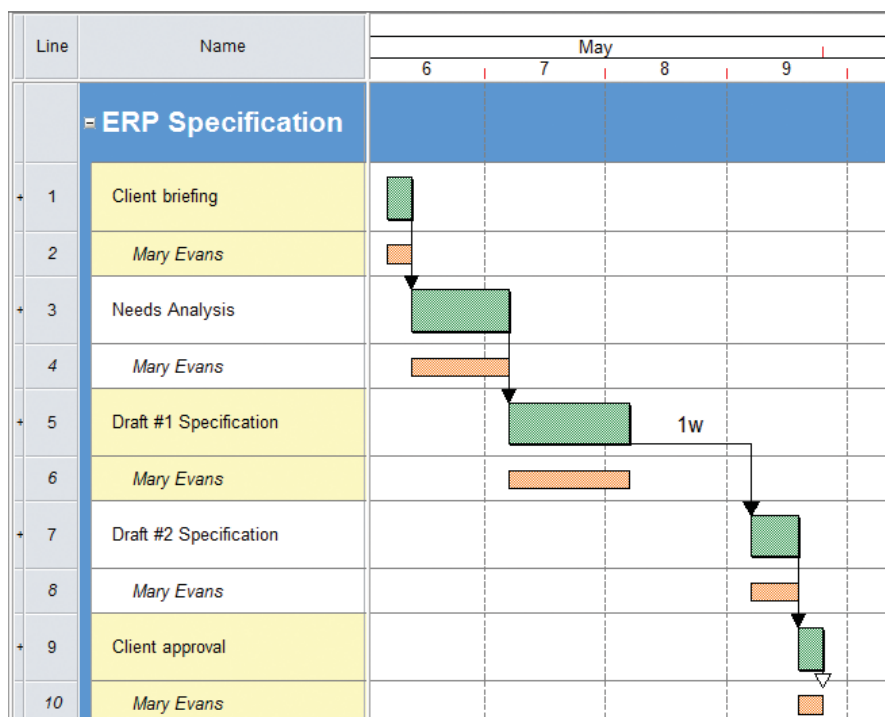
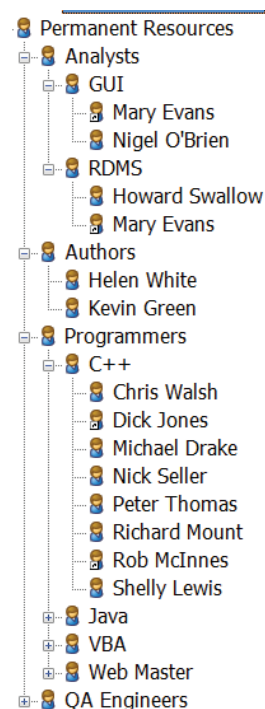


“The problem with using basic software, like MS Project, is that it only allows you to manage one project at a time, so you can't see any conflict across all projects and resource. The Asta Powerproject suite is a programme and project tool which allows us to see all pipeline and live projects at any one time and manage resource more effectively across them all.”

Robert Douglass
Project Systems Manager - Denbighshire CC

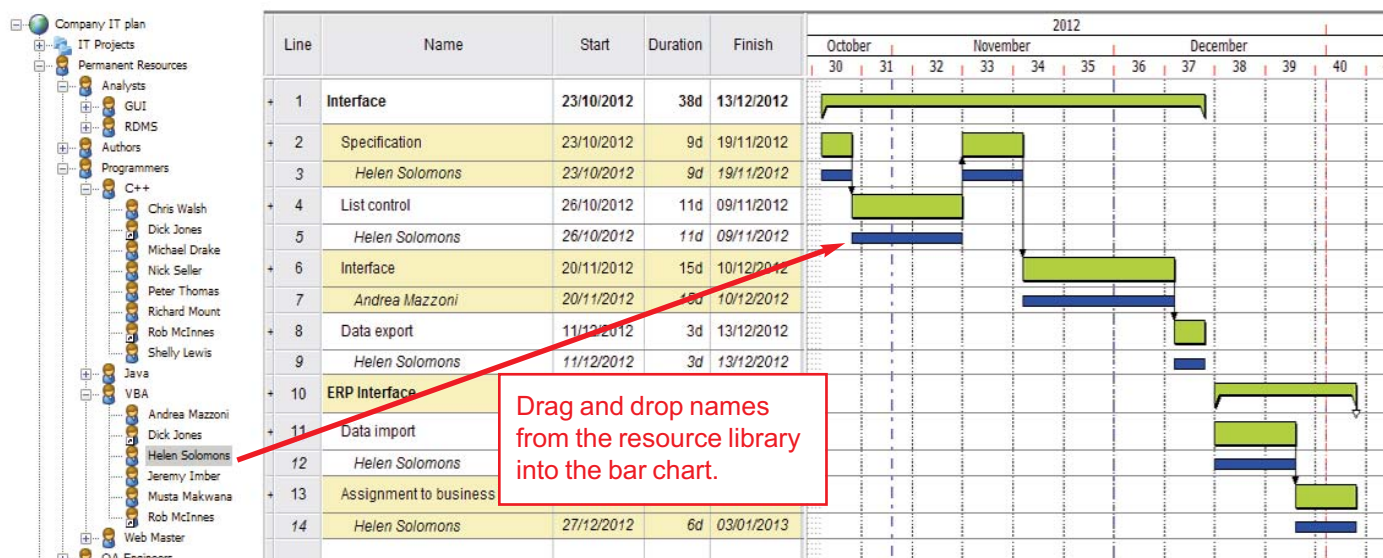
► Managing resources

Asta Powerproject allows you to assign departments or specific individuals with the appropriate skill set to each task for detailed planning at a later point. With an easy 'drag and drop' functionality, the software makes it simple for you to allocate resources across tasks.



Example of a permanent resource library
– in this case, staff by job function.

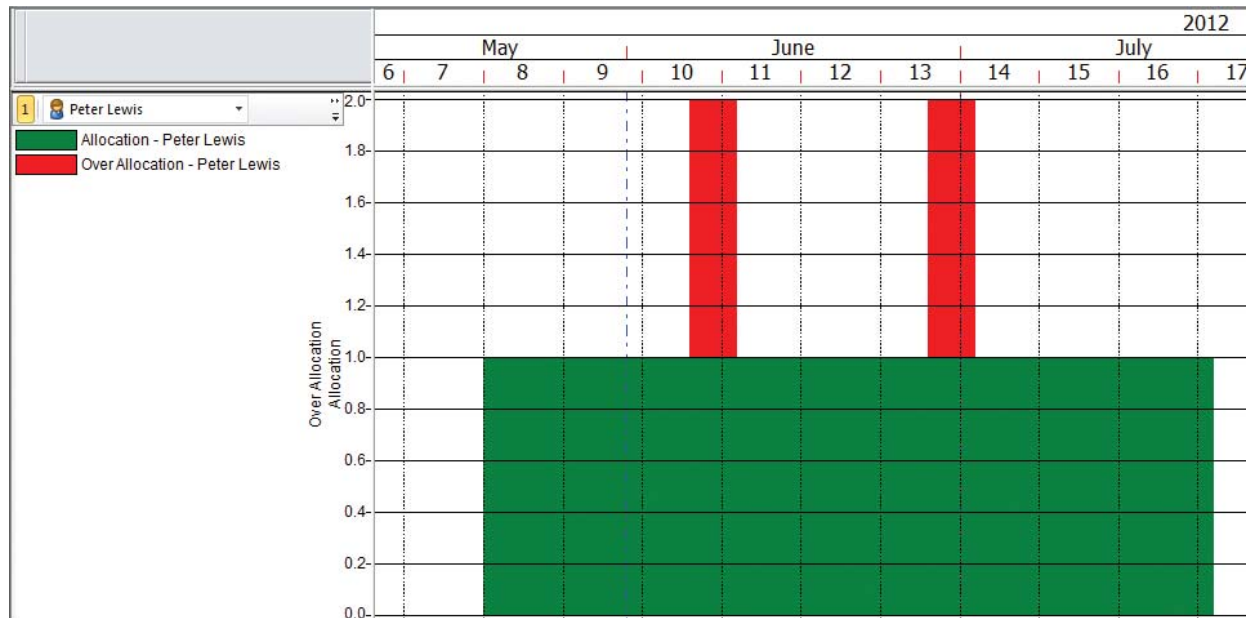
Allocated resources are displayed in the spreadsheet and on the bar chart.



Resource library, spreadsheet and bar chart.

► Clear visibility of activity

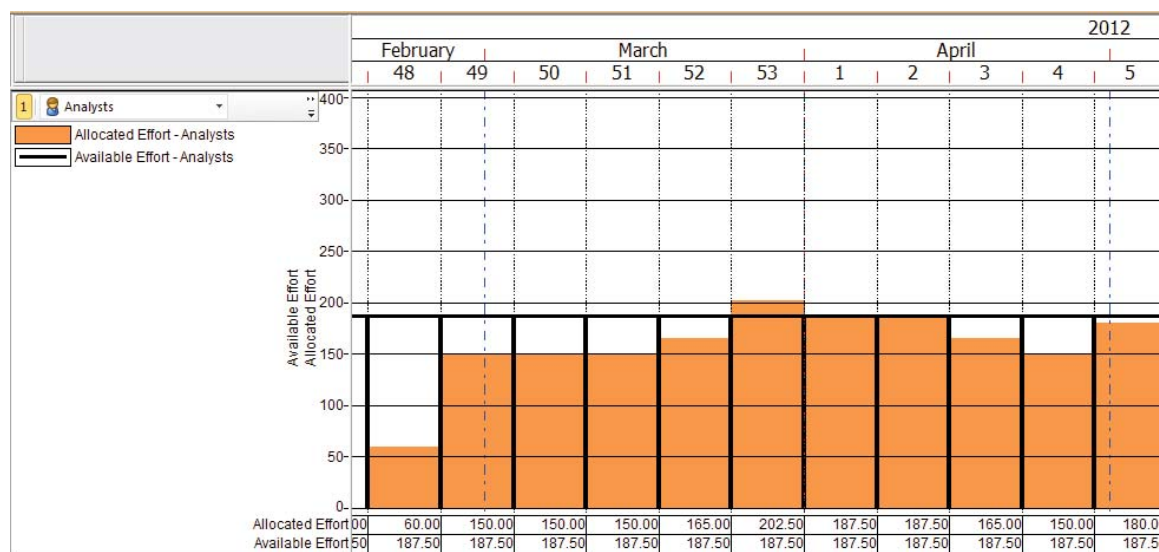
Once you have allocated resources, the histograms provide clear visibility over all your allocations and clearly illustrate any over-allocations or under-utilisations. As a result, you can see who is doing what, when and where and the duration of each task. If a resource is over-allocated you can easily locate the offending task or tasks.



An example of how an over-allocation appears.

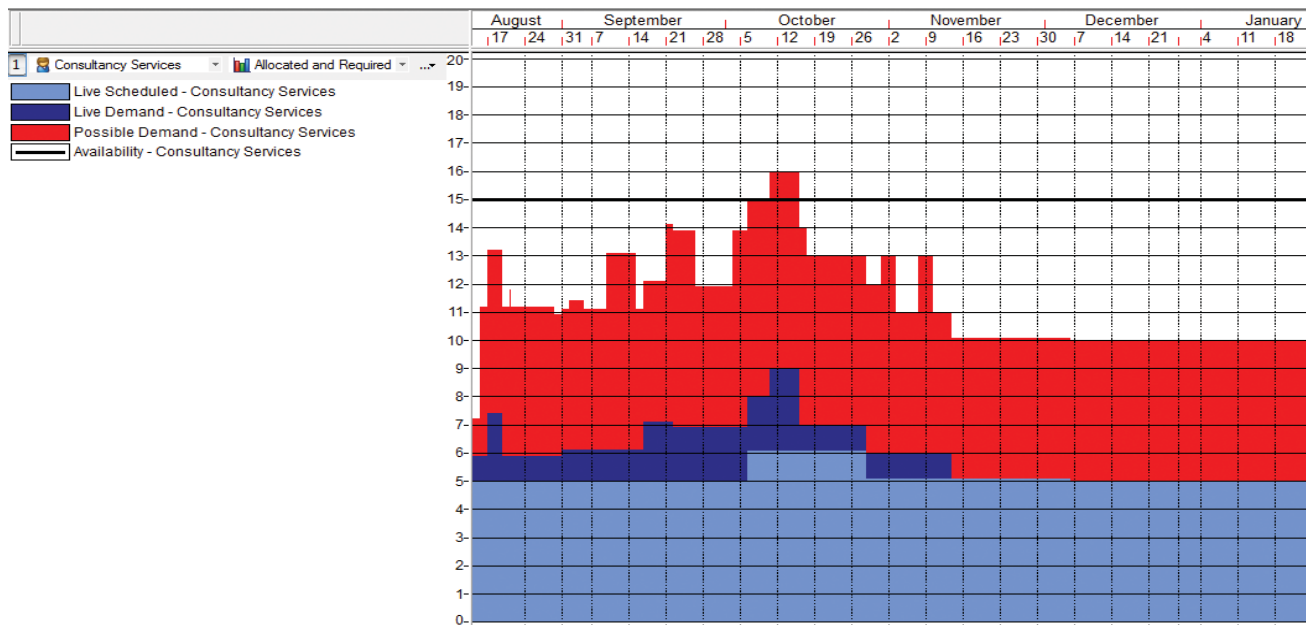
Using the split screen view you can move the task forward or back and see the resource histogram changing. Showing you the available slots for the task to be carried out. You can carry out the same process for whole phases or entire projects.

Asta Powerproject gives you a clear overview of all your resources at project, programme and portfolio level. As a result, you can quickly and easily see if you have sufficient resources for your projects or, alternatively, if you have enough projects to keep your teams busy.



Histogram showing the availability and use of a resource – in this case, consultancy services.

TAKE CONTROL OF YOUR RESOURCES WITH THE ASTA POWERPROJECT SUITE



Histogram showing live scheduled, live demand, possible demand and availability of consultancy services.

Asta Powerproject instantly alerts you if you assign a resource that is already allocated elsewhere. The system will also suggest an alternative member of the same skill group who is available to carry out the task.

► Skill Search

The powerful Resource Skills Search tool will quickly find resources based on your chosen search criteria. You can search by skill, location, availability and criteria in order to find the right person for the task. Once found they can be filtered by match percentage, placing those that have a 100% match to all your criteria at the top; perfect for dealing with those un-planned challenges caused by absences.

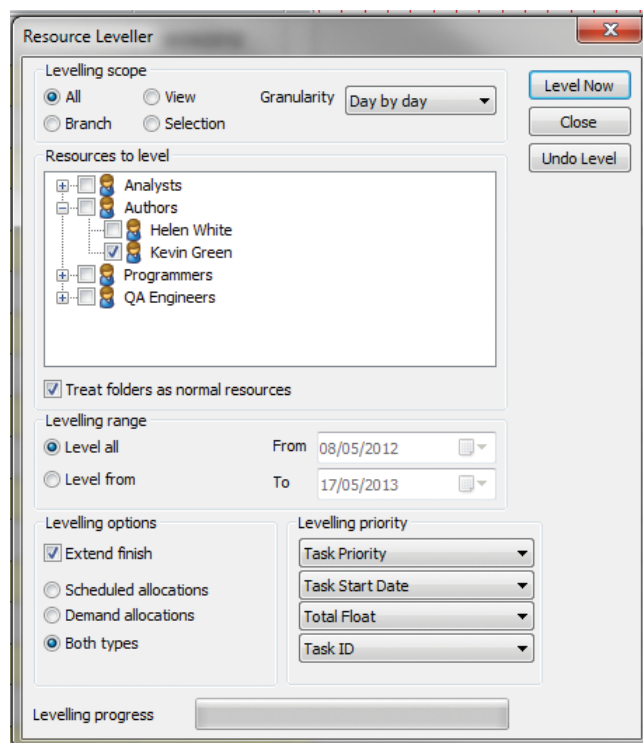
Name	Skill	Match %	Initial Availability	Availability %	Description
Andrea Mazzoni	VBA	50	1	100	Programmers.VBA.Andrea Mazzoni
C++	Programmers	50	0	0	Programmers.C++
Java	Programmers	50	0	0	Programmers.Java
Anton Ilivitzky	Java	0	1	100	Programmers.Java.Anton Ilivitzky
Beth Olofin	Java	0	1	100	Programmers.Java.Beth Olofin
VBA	Programmers	50	0	0	Programmers.VBA
Web Master	Programmers	50	0	0	Programmers.Web Master

Using the Resource Skills Search tool.

► Resource Levelling

Asta Powerproject comes with a resource leveller which will smooth the allocation based on priority parameters selected. This tool is designed to achieve an even level of resources across your project by 'flattening' any over-allocations. It does this by employing a number of techniques such as delaying tasks, delaying resource allocations on tasks, splitting resource allocations and increasing a task's length in order to reduce the resource allocation.

Asta Powerproject's flexibility allows you to level resources across the entire project or a specific time period. Invariably, resource levelling your project will delay the finish date. With **Asta Powerproject** you have the option not to delay the finish date; however this may result in some over-allocations remaining once resources have been levelled.

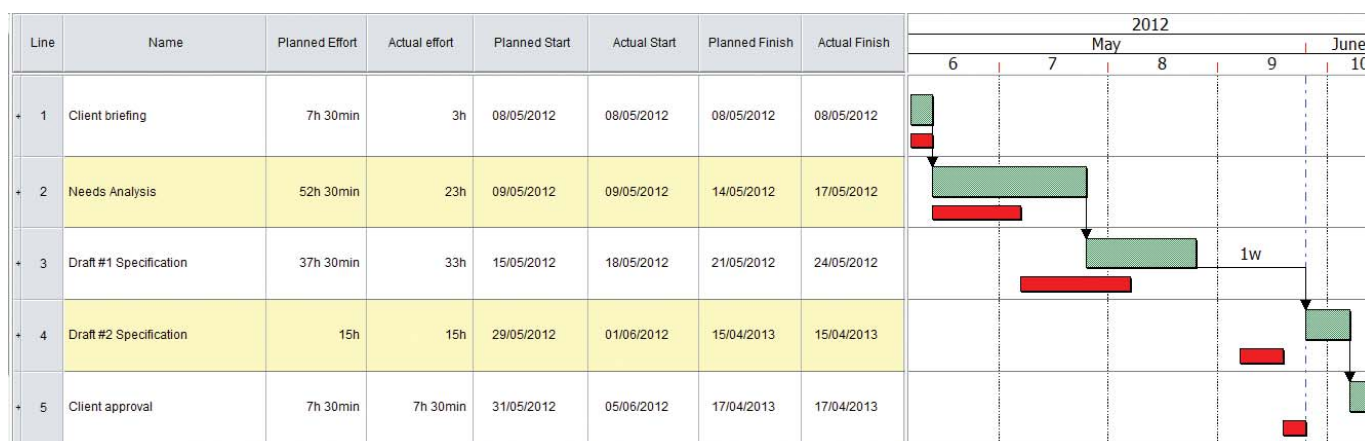


The resource leveller allows you to level resources across the entire project.

► Assessing Planned Effort vs. Actual Effort

Being able to assess the impact of change is one of the key benefits of an integrated project and resource management system like **Asta Powerproject**. Projects are not set in stone; they are constantly subject to change whether it is in scope, dates or resources. Having a system that highlights any conflicts, while enabling you to evaluate alternative scenarios, will prove invaluable to you.

You can compare your planned vs. actual effort on projects using **Asta Powerproject's** unlimited baselines. A baseline is a snapshot of all or part of a project at a certain time. Baselines contain a copy of everything in the project, such as bars, tasks, links, resource allocations, libraries, histograms and annotations.



Compare the actual effort against the planned effort in a project.

As the project progresses, you can easily compare the actual effort against the planned effort at any level of the project or programme and graph these values in Asta's histograms. Whilst a project may still start and end on time, the additional resource planning needed in order to meet that deadline are clearly shown.

► Resource Reporting

With **Asta Powerproject** you can produce reports which enable you to report on a project's progress, cost, resource allocations and much more. Reports can be presented in a variety of formats, including static tabular, graphical histogram and dashboard style.

Whether you want to show how much effort is going into a particular phase of a project or how much time a particular resource is putting in per week, **Asta Powerproject** collates and presents the data you need. Reports can be accessed via the web or network, as well as

exported for use with a third-party reporting tool. A Report Breakdown Structure feature allows you to double-click on a person to see all the tasks that they are working on.

With easy web access, simple to use time sheets and powerful reporting and business intelligence tools, **Asta Powerproject** is able to support everyone involved in resourcing across project-related activity.

► Time Sheet

A web based tool that enables team members to complete tasks on time, report progress and record expenses.

Time Sheet
Role
Resource Manager
Timesheet date
16/10/2011
Project
Asta Demo
User
Admin

File
Actions
Timesheet
Help

Report
Prepare for Printout
Reminders
Return to Login
Help

License total: 300 -- timesheets this period: 5

Resource	ID	Status	Res Info Edited	Estimate To Complete Changed	Alloc Created	Alloc Deleted	Task Created	Comment for Timesheet	Time Reported On Allocations	Other Time Reported	Total Time Reported	Overtime Reported	Scheduled Time	Last Update	Update By	
Geoff Smith	12	Edited		✓				✓	41h		41h		40h	13/12/2011	Admin	View
Hamid Khan	11	Edited							37h		37h		40h	13/12/2011	Admin	View
Jee Soon	13	Edited							32h		32h		40h	13/12/2011	Admin	View
Mary Richards	15	Edited			✓				34h	2h	36h		40h	13/12/2011	Admin	View
Sue Jones	10	Edited							40h		40h		40h	13/12/2011	Admin	View

Refilter Timesheets

☐ Ignore timesheet date

☒ Show all resources ☐ Specific resource or resources (multi-select)

Show timesheet categories:

☐ None ☒ Created ☒ Edited

☐ Submitted ☐ Rejected ☐ Re-submitted ☐ Resource

☐ Approved ☐ Applied ☐ All Labour

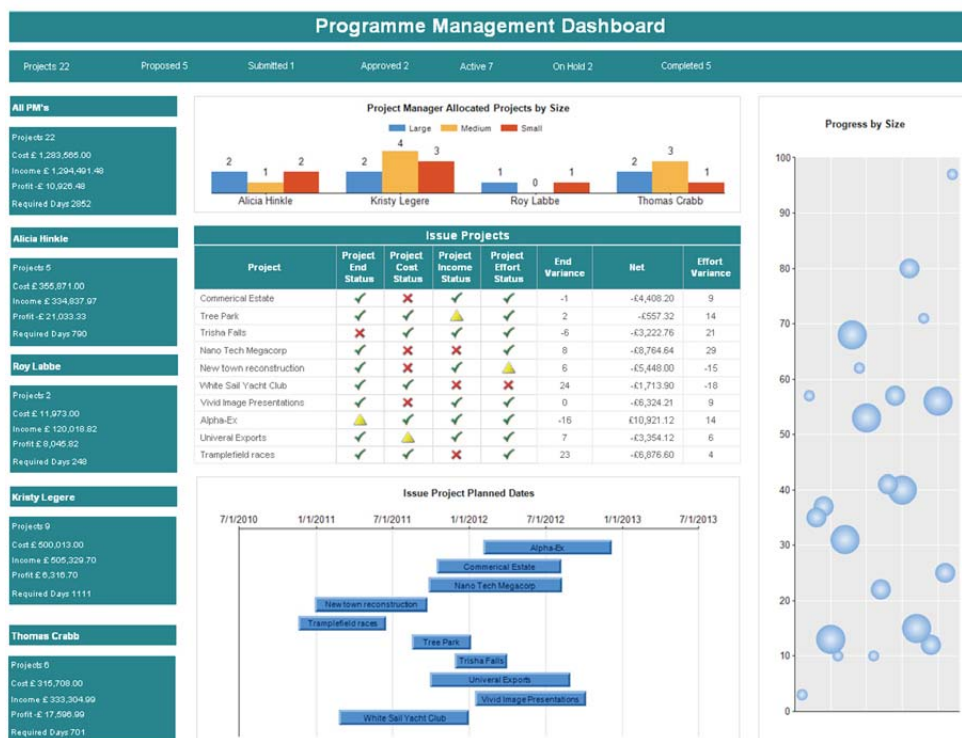
[Refilter](#)

Sample Time Sheet screen showing a resource manager's summary view.

TAKE CONTROL OF YOUR RESOURCES WITH THE ASTA POWERPROJECT SUITE

► Business Intelligence

High quality dashboard views give clear visibility over all your resources and project progress enabling senior managers to monitor resource and cost at high level to be aware of what is on track and what needs to be reviewed.



Dashboard views provide instant visibility over project progress and resources.

► Web Access

Remote access for all involved in projects to view progress, resource and cost reports with ease.

File View Action Help

Update Abandon Return to Login Help

Portfolio Asta Demo User Admin View TRACKING Time Generated 12/12/2011 10:52:17 Project Crow Chart Structure

Line	Activity Name	Duration	Planned Start	Planned Finish	Planned % complete	% complete	Actual start	Actual finish	Duration remaining
1	1st Lift Brickwork	2w	14/08/2012	27/08/2012	0.00	100	13/12/2011	16/12/2011	2w
2	1st Floor Pad	1w	28/08/2012	03/09/2012	0.00	50	19/12/2011		1w
3	2nd Lift Brickwork	4w	04/09/2012	01/10/2012	0.00	0.00			4w
4	Roof Trusses	5w 4d	02/10/2012	09/11/2012	0.00	0.00			5w 4d
5	Tiling	3d	12/11/2012	14/11/2012	0.00	0.00			3d

The resource leveller allows you to level resources across the entire project.

► Asta Powerproject enables you to take control of your resource management

By combining efficient project management with effective resource management in one central system, it gives you a solution for accurately monitoring your organisation's performance to help you deliver projects on time and on budget.

The result is a system that:

- Reduces risks through its visibility and accurate data
- Saves money with improved efficiencies in the way data is recorded, stored and shared

Asta Powerproject – a powerful, seamless and flexible software solution for multiple projects. Includes software, consultancy, implementation, training and technical support.

ASTA DEVELOPMENT PLC

Kingston House
Goodsons Mews
Wellington Street
Thame
Oxfordshire
OX9 3BX
United Kingdom

E: enquiries@astadev.com

T: +44 (0)1844 261700

F: +44 (0)1844 261314

© 2012 Asta Development plc

Asta Powerproject is a registered trademark of Asta Development plc.

All trademarks recognised.