

Asta Powerproject

REPORTING POWER AND FLEXIBILITY FROM ASTA POWERPROJECT

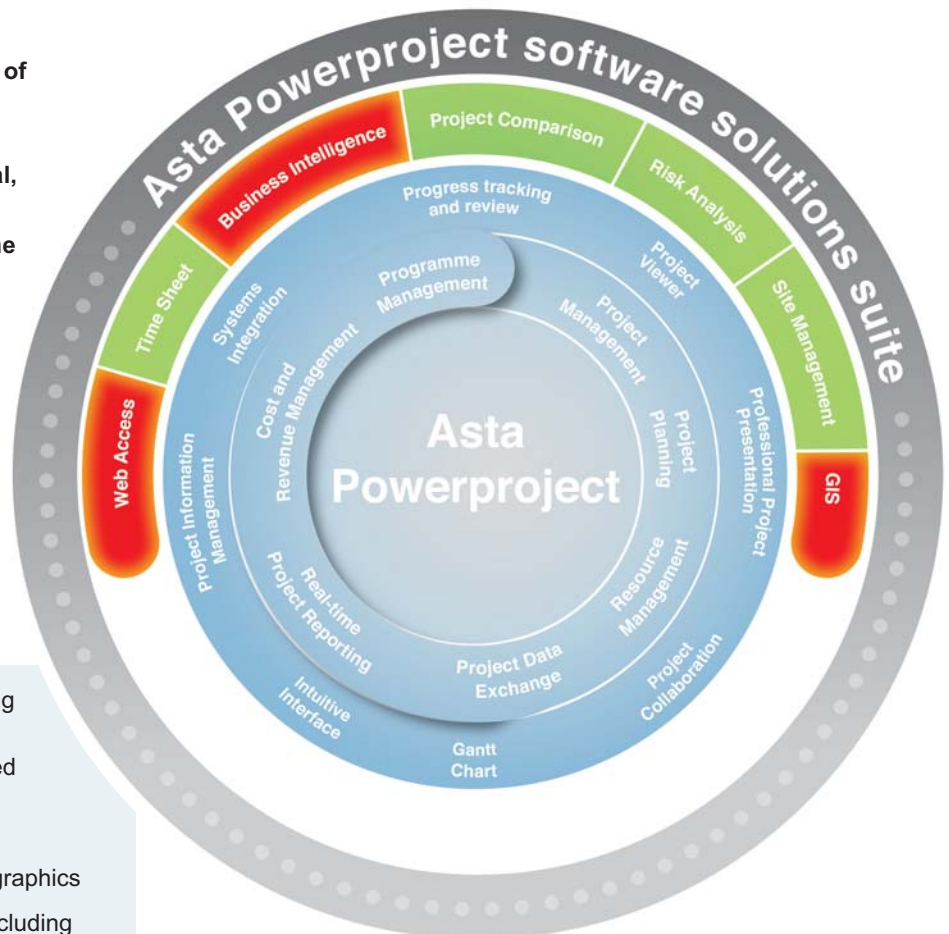
Overcome your reporting challenges with powerful reporting tools from the Asta Powerproject suite.

Asta Development has over 20 years of experience of working with project managers. We understand the daily challenges of producing professional, appropriate, reports for all your different stakeholders when your time is at a premium.

Asta Powerproject's reporting functionality enables you to produce and present high quality project plans at all levels, keep up-to-date with your projects when you aren't in the office, and effectively report on projects wherever they are - even when you can't visit every project site as often as you'd like.

The **Asta Powerproject** suite has long been valued for its **core reporting functionality** which provides unrivalled presentation tools allowing you to:

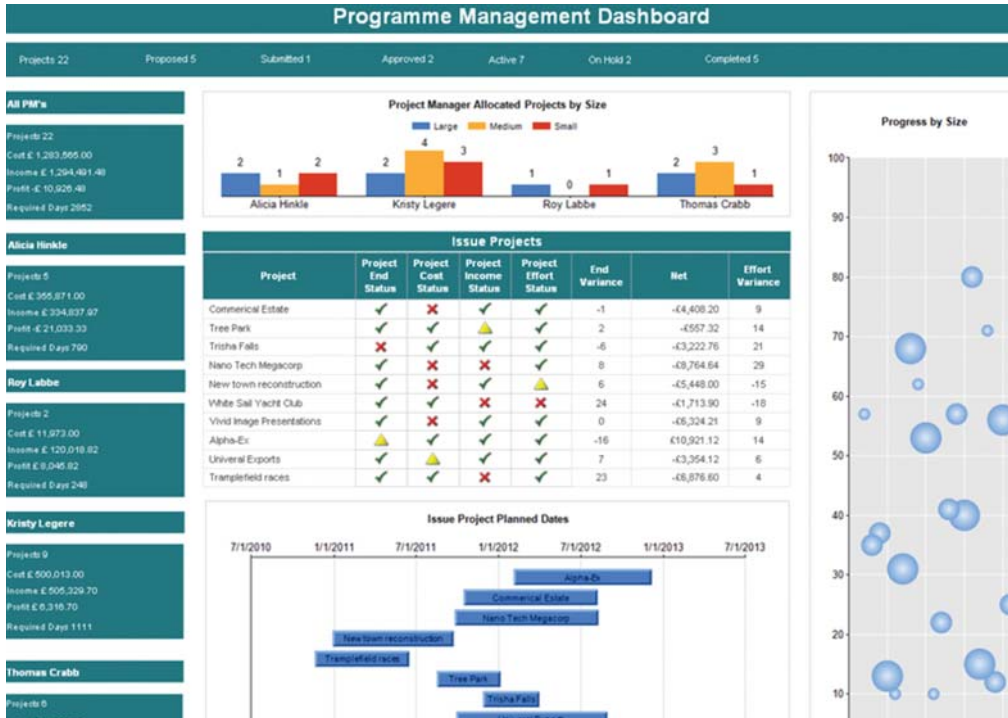
- Highlight important information with annotations – add text, images and graphics
- Import Microsoft Windows objects including Excel spreadsheets, AutoCAD etc.
- Create borders with the inbuilt Asta Powerdraw software
- Gain output quality that matches your screen view
- Choose which features of a report are displayed
- Save selected aspects or views of a project or the full project as HTML output with graphics if required



In addition, we have developed three powerful tools to extend the reporting functionality of the suite:

- 1) **Business Intelligence** – produces high quality dashboard reports for senior-level review of complex or multiple projects
- 2) **Web Access** – provides cost effective access to your reports over the web 24-7
- 3) **Geographical Information (GIS)** – enables a view of actual project sites wherever they are in the world and the ability to drill down to critical data on any individual project

Business Intelligence for *Asta Powerproject*



A powerful analytical tool for generating clear portfolio reports on any combination of project data, Business Intelligence provides complete visibility over your current performance to ensure that your objectives are being met and that costs are tightly managed.

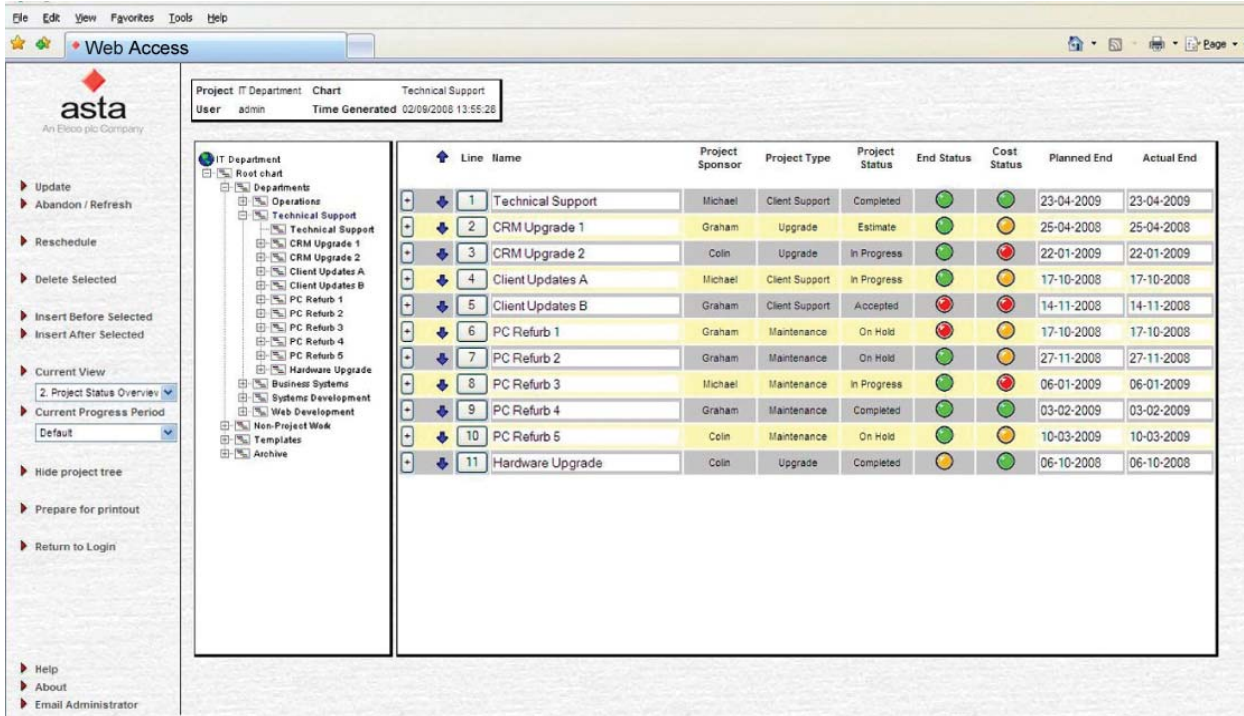
The tool can simply generate accurate dashboard reports to show progress, cost and resource status which allow effective communication on performance and highlights critical task information.

Status reports can be rapidly created without having to collate the data manually - enabling project managers to produce and publish key performance reports, critical milestone reports and cost reports with ease.

Business Intelligence has a built-in exporter which enables data from **Asta Powerproject** to be combined with third-party data sources to form tailored web reports for specific users. It comes with a number of report templates so that you can create professional looking reports which can be run as required.

Users with experience of Microsoft SQL will be able to create their own dashboard reports, while those less experienced in report writing can benefit from Asta's professional consultancy services. Reports can be published in numerous formats including Excel, PDF, HTML, XKM, TIFF and CSV.

Web Access for *Asta Powerproject*



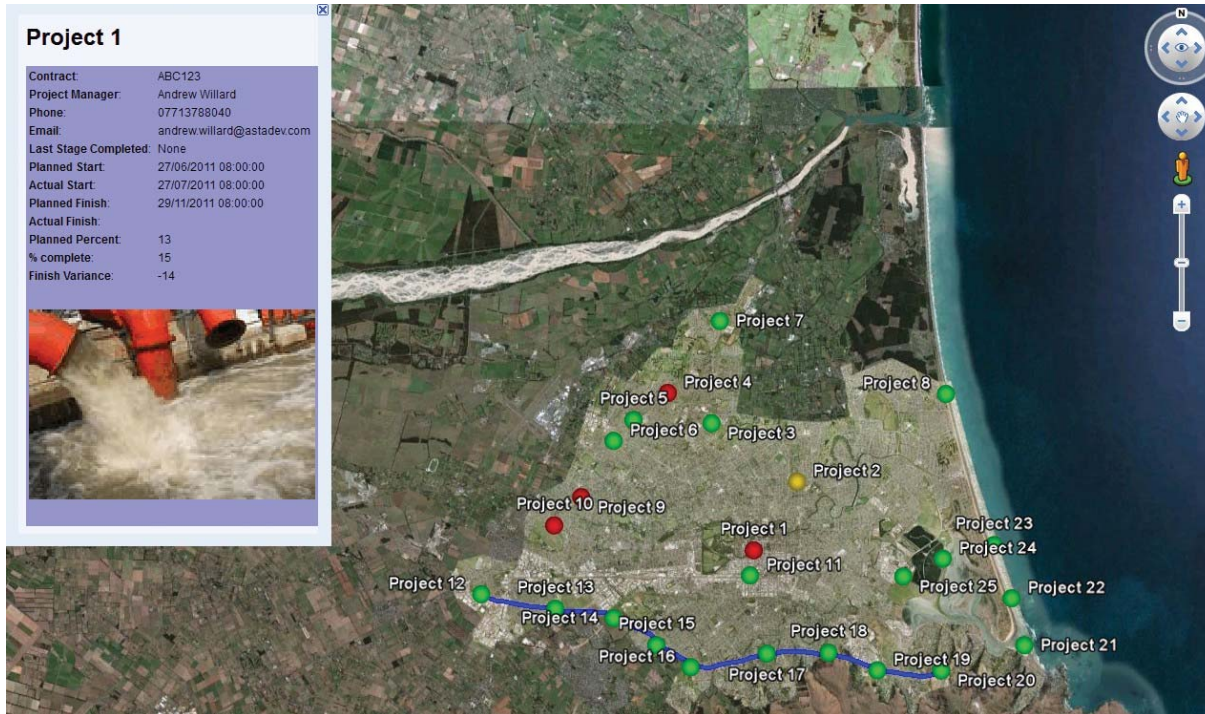
A low cost solution for remote project access and collaboration enabling you to view, edit and share all your current project data regardless of time or location for improved communication and project collaboration.

Web Access is a web based project management tool providing remote or occasional users with secure access to real-time project data 24-7. It has an easy-to-use interface for navigating the project hierarchy, creating and editing tasks, and updating progress remotely by percentage, quantity and man-hours.

Through secure online access, the system enables project managers to remain in control of their projects when away from the office as they can log in from any location to view progress and update the plan. Senior management can access real-time status reports and drill down to analyse the data in more detail.

With a secure login facility and tightly controlled user rights and permissions, Web Access ensures that individual access can be set according to relevance. The system also offers a 'prepare for print' function, which removes all unnecessary data for more compact and readable project plans.

GIS for *Asta Powerproject*



The GIS application allows you to view your project status geographically on a map interface in Google Earth.

GIS allows you to see the status of your projects on map locations and click on each to see details. You can see high level reports at location view and drill down for further detail as you require.

Project locations that need attention can be highlighted and you can drill down to photographs posted against GIS points at the location. This visual element helps to improve communication between all stakeholders and speeds up the decision making process for corrective action when it is required.

Multiple project locations can be shown by latitude and longitude, with colour coded markers indicating project status for easy identification of which locations are on track and which need investigation. If everywhere you look is green you can be reassured all is going well. Wherever there is some cause for concern you are able to drill down to see project information detail.

Where the project involves a road, railway or other linear object, you can open a new Google Earth folder and merge with existing layer files that contain maps of the work.